

MUNICIPIO DE COLÔNIA DO PIAUÍ
PROJETO LUMINOTECNICO

Via Tipo V2

Operator
Telephone
Fax
e-Mail

Table of contents

Road Lighting Project-V1	
Project Cover	1
Table of contents	2
Street V1	
Planning data	3
Photometric Results	5
3D Rendering	6
False Color Rendering	7
Valuation Fields	
Valuation Field Roadway 1	
Value Chart (E)	8
Observer	
Observer 1	
Isolines (L)	9
Observer 2	
Isolines (L)	10
Observer 3	
Isolines (L)	11
Observer 4	
Isolines (L)	12

Operator
Telephone
Fax
e-Mail

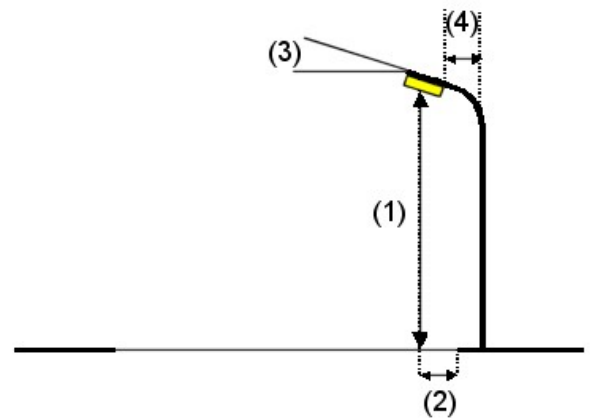
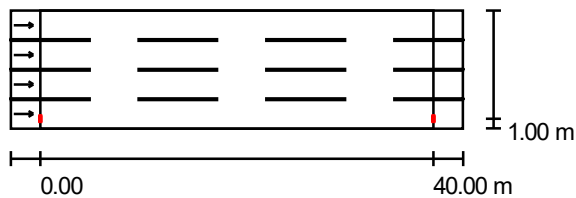
StreetV1/Planningdata

Street Profile

Roadway 1 (Width: 12.000 m, Number of lanes: 4, tarmac: R3, q0: 0.070)

Light loss factor: 1.00

Luminaire Arrangements



Luminaire:	100 W
Luminous flux (Luminaire):	17000 lm
Luminous flux (Lamps):	17000 lm
Luminaire Wattage:	100.0 W
Arrangement:	Single row, bottom
Pole Distance:	40.000 m
Mounting Height (1):	12.000 m
Height:	12.000 m
Overhang (2):	1.000 m
Boom Angle (3):	0.0 °
Boom Length (4):	3.000 m

Maximum luminous intensities

at 70°:	721 cd/klm
at 80°:	681 cd/klm
at 90°:	7.58 cd/klm

Any direction forming the specified angle from the downward vertical, with the luminaire installed for use.

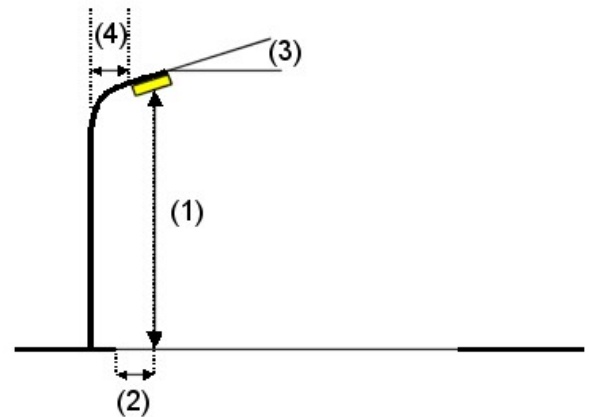
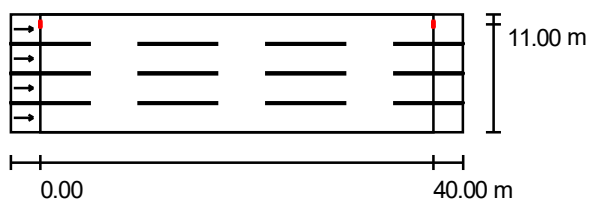
No luminous intensities above 90°.

Arrangement complies with glare index class D.5.

Operator
Telephone
Fax
e-Mail

StreetV1/Planningdata

Luminaire Arrangements



Luminaire:	100 W
Luminous flux (Luminaire):	17000 lm
Luminous flux (Lamps):	17000 lm
Luminaire Wattage:	100.0 W
Arrangement:	Single row, top
Pole Distance:	40.000 m
Mounting Height (1):	12.000 m
Height:	12.000 m
Overhang (2):	1.000 m
Boom Angle (3):	0.0 °
Boom Length (4):	3.000 m

Maximum luminous intensities	
at 70°:	721 cd/klm
at 80°:	681 cd/klm
at 90°:	7.58 cd/klm

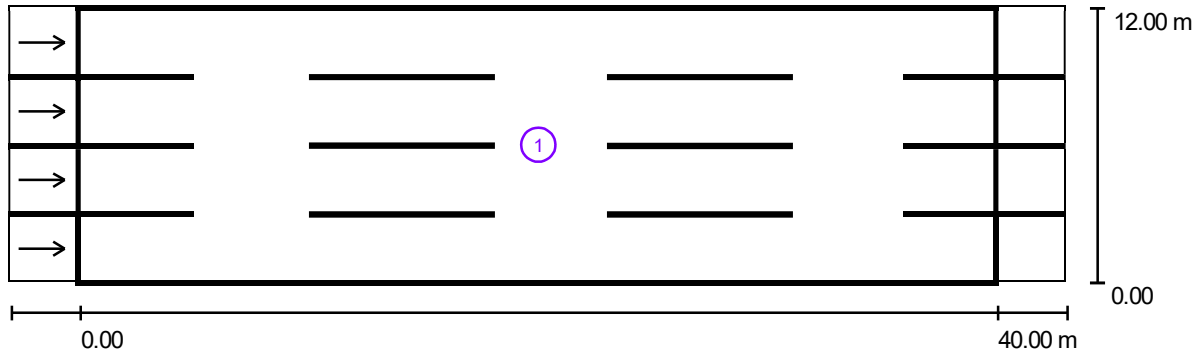
Any direction forming the specified angle from the downward vertical, with the luminaire installed for use.

No luminous intensities above 90°.

Arrangement complies with glare index class D.5.

Operator
Telephone
Fax
e-Mail

StreetV1/PhotometricResults



Light loss factor: 1.00

Scale 1:329

Calculation Field List

- 1 Valuation Field Roadway 1
Length: 40.000 m, Width: 12.000 m
Grid: 14 x 12 Points
Accompanying Street Elements: Roadway 1.
tarmac: R3, q0: 0.070
Selected Lighting Class: ME4a

(All lighting performance requirements are met.)

	L_{av} [cd/m ²]	U0	UI	TI [%]	SR
Calculated values:	2.07	0.59	0.91	14	0.78
Required values according to class:	≥ 0.75	≥ 0.40	≥ 0.60	≤ 15	≥ 0.50
Fulfilled/Not fulfilled:	✓	✓	✓	✓	✓

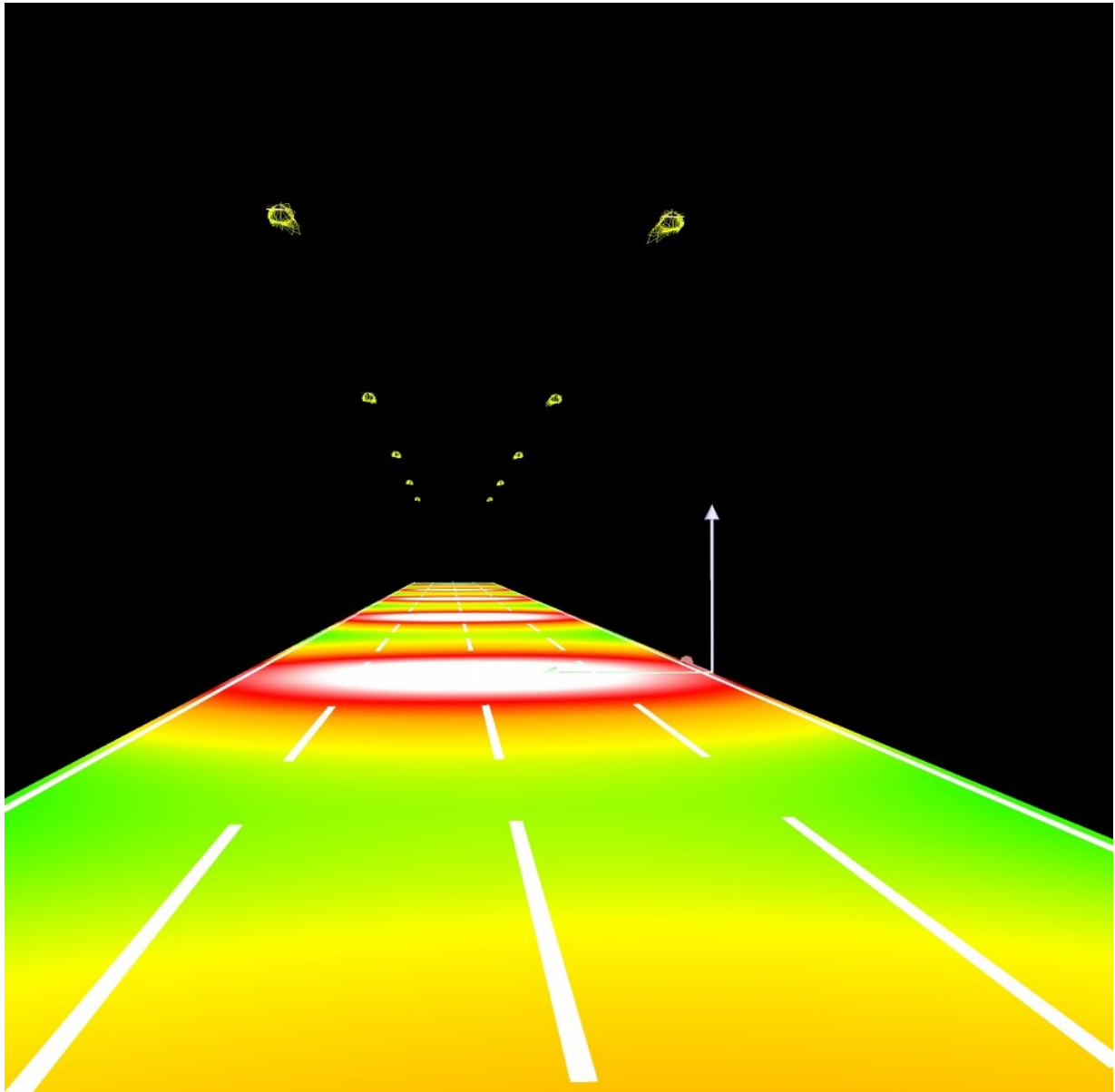
Operator
Telephone
Fax
e-Mail

StreetV1/3DRendering



Operator
Telephone
Fax
e-Mail

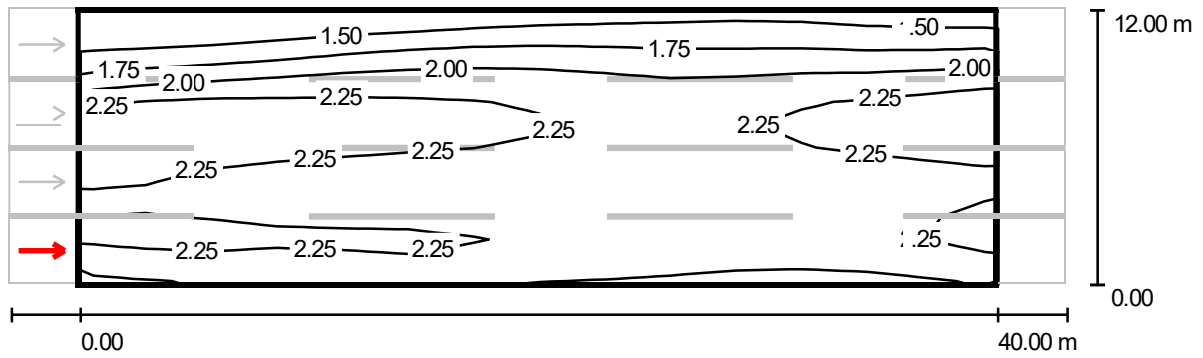
StreetV1/FalseColorRendering



0 3.75 7.50 11.25 15 18.75 22.50 26.25 30 lx

Operator
Telephone
Fax
e-Mail

StreetV1/ValuationFieldRoadway1/Observer1/Isolines(L)



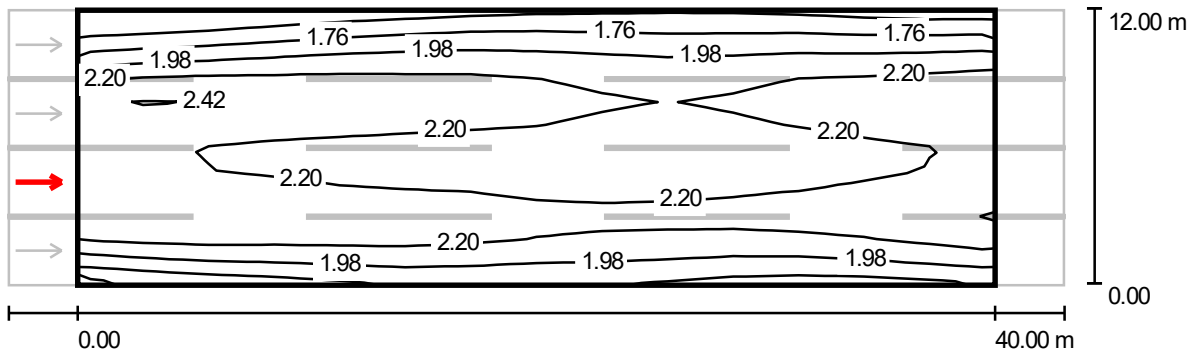
Values in Candela/m², Scale 1 : 329

Grid: 14 x 12 Points
Observer Position: (-60.000 m, 1.500 m, 1.500 m)
tarmac: R3, q0: 0.070

	L_{av} [cd/m²]	U0	UI	TI [%]
Calculated values:	2.07	0.60	0.93	13
Required values according to class ME4a:	≥ 0.75	≥ 0.40	≥ 0.60	≤ 15
Fulfilled/Not fulfilled:	✓	✓	✓	✓

Operator
Telephone
Fax
e-Mail

StreetV1/ValuationFieldRoadway1/Observer2/Isolines(L)



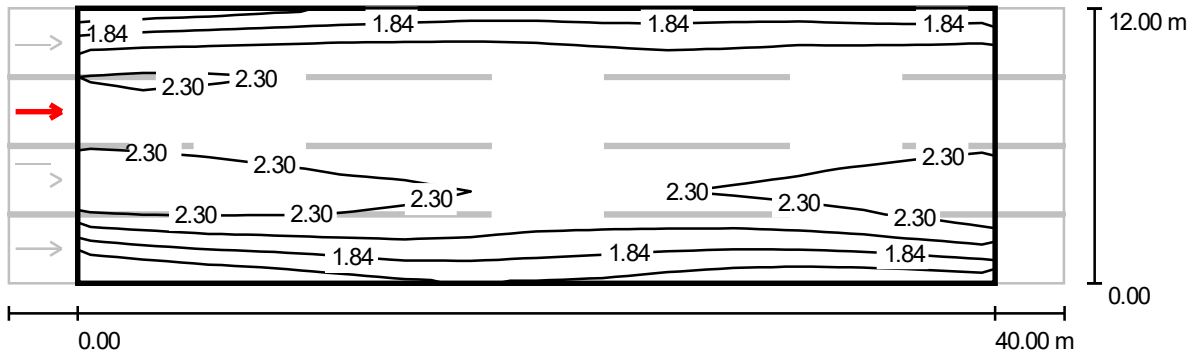
Values in Candela/m², Scale 1 : 329

Grid: 14 x 12 Points
Observer Position: (-60.000 m, 4.500 m, 1.500 m)
tarmac: R3, q0: 0.070

	L_{av} [cd/m²]	U0	UI	TI [%]
Calculated values:	2.10	0.65	0.91	14
Required values according to class ME4a:	≥ 0.75	≥ 0.40	≥ 0.60	≤ 15
Fulfilled/Not fulfilled:	✓	✓	✓	✓

Operator
Telephone
Fax
e-Mail

StreetV1/ValuationFieldRoadway1/Observer3/Isolines(L)



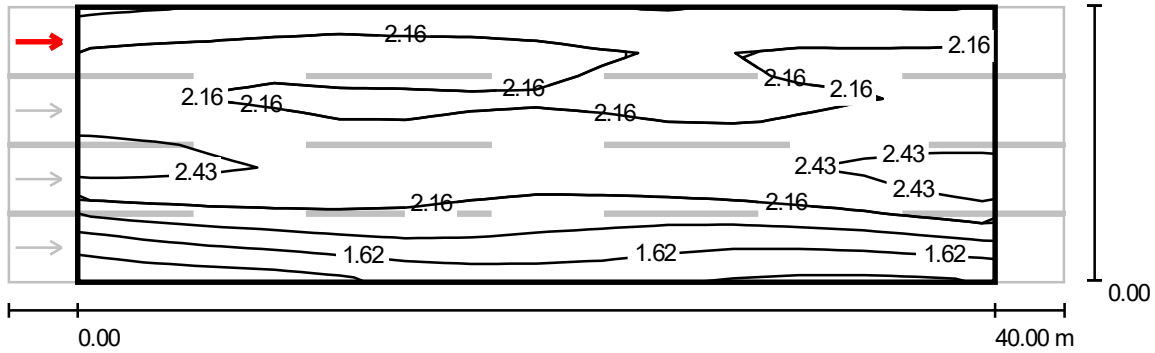
Values in Candela/m², Scale 1 : 329

Grid: 14 x 12 Points
Observer Position: (-60.000 m, 7.500 m, 1.500 m)
tarmac: R3, q0: 0.070

	L_{av} [cd/m ²]	U0	UI	TI [%]
Calculated values:	2.10	0.66	0.93	14
Required values according to class ME4a:	≥ 0.75	≥ 0.40	≥ 0.60	≤ 15
Fulfilled/Not fulfilled:	✓	✓	✓	✓

Operator
Telephone
Fax
e-Mail

StreetV1/ValuationFieldRoadway1/Observer4/Isolines(L)



Values in Candela/m², Scale 1 : 329

Grid: 14 x 12 Points
Observer Position: (-60.000 m, 10.500 m, 1.500 m)
tarmac: R3, q0: 0.070

	L_{av} [cd/m²]	U0	UI	TI [%]
Calculated values:	2.08	0.59	0.94	12
Required values according to class ME4a:	≥ 0.75	≥ 0.40	≥ 0.60	≤ 15
Fulfilled/Not fulfilled:	✓	✓	✓	✓