

MUNICIPIO DE COLÔNIA DO PIAUÍ
PROJETO LUMINOTECNICO

VIA TIPO V3

Operator
Telephone
Fax
e-Mail

Table of contents

Road Lighting Project-V2	
Project Cover	1
Table of contents	2
Street V2	
Planning data	3
Photometric Results	5
3D Rendering	6
False Color Rendering	7
Valuation Fields	
Valuation Field Roadway 1	
Value Chart (E)	8
Observer	
Observer 1	
Isolines (L)	9
Observer 2	
Isolines (L)	10
Observer 3	
Isolines (L)	11
Observer 4	
Isolines (L)	12

Operator
Telephone
Fax
e-Mail

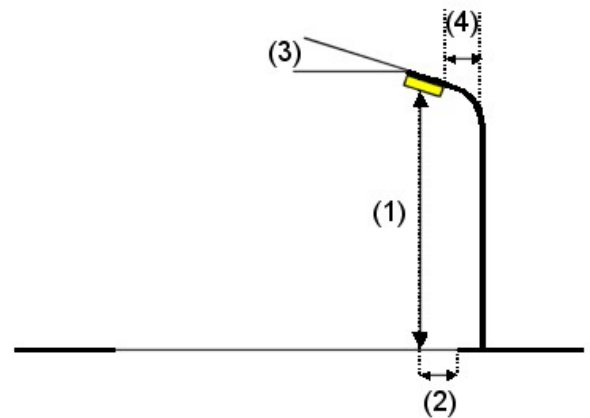
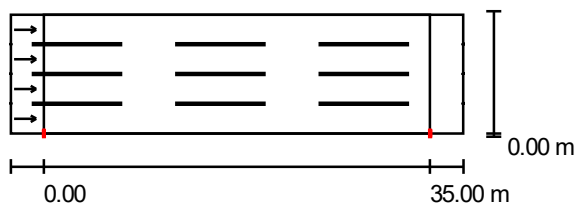
StreetV2/Planningdata

Street Profile

Roadway 1 (Width: 10.800 m, Number of lanes: 4, tarmac: R3, q0: 0.070)

Light loss factor: 1.00

Luminaire Arrangements



Luminaire:	37 W
Luminous flux (Luminaire):	6290 lm
Luminous flux (Lamps):	6290 lm Luminaire
Wattage:	37,0 W
Arrangement:	Single row, bottom
Pole Distance:	35.000 m
Mounting Height (1):	9.000 m
Height:	9.000 m
Overhang (2):	0.000 m
Boom Angle (3):	0.0 °
Boom Length (4):	2.500 m

Maximum luminous intensities

at 70°: 717 cd/klm

at 80°: 725 cd/klm

at 90°: 11.82cd/klm

Any direction forming the specified angle from the downward vertical, with the luminaire installed for use.

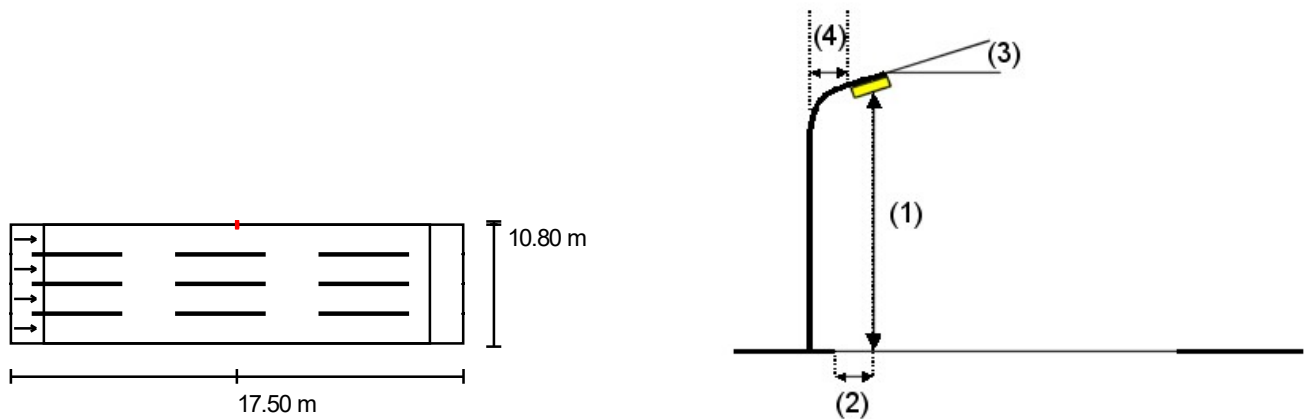
No luminous intensities above 90°.

Arrangement complies with glare index class D.4.

Operator
Telephone
Fax
e-Mail

StreetV2/Planningdata

Luminaire Arrangements



Luminaire:	37 W
Luminous flux (Luminaire):	6290 lm
Luminous flux (Lamps):	6290 lm
Luminaire Wattage:	37,0 W
Arrangement:	Single row, top
Pole Distance:	35.000 m
Mounting Height (1):	9.000 m
Height:	9.000 m
Overhang (2):	0.000 m
Boom Angle (3):	0.0 °
Boom Length (4):	2.500 m

Maximum luminous intensities	
at 70°:	717 cd/klm
at 80°:	725 cd/klm
at 90°:	11.82 cd/klm

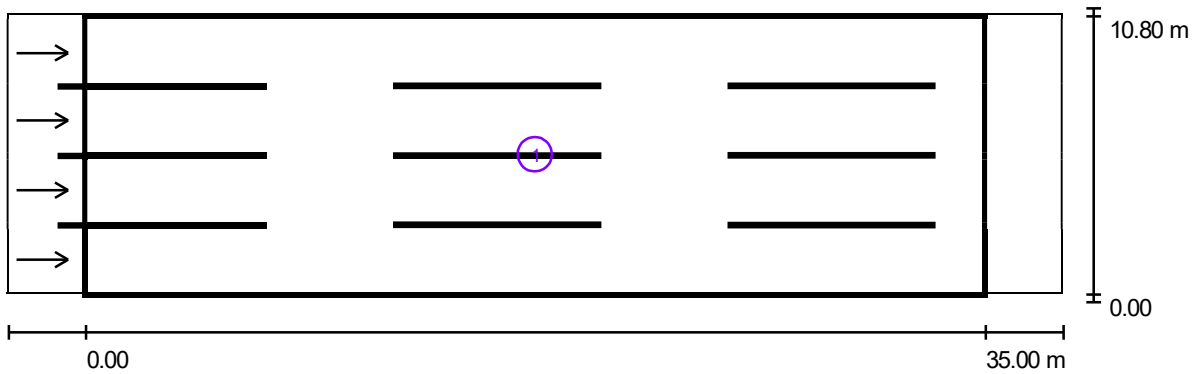
Any direction forming the specified angle from the downward vertical, with the luminaire installed for use.

No luminous intensities above 90°.

Arrangement complies with glare index class D.4.

Operator
Telephone
Fax
e-Mail

StreetV2/PhotometricResults



Light loss factor: 1.00

Scale 1:294

Calculation Field List

- 1 Valuation Field Roadway 1
 Length: 35.000 m, Width: 10.800 m
 Grid: 12 x 12 Points
 Accompanying Street Elements: Roadway 1.
 tarmac: R3, q0: 0.070
 Selected Lighting Class: ME4a

(All lighting performance requirements are met.)

	L_{av} [cd/m ²]	U0	UI	TI [%]	SR
Calculated values:	1.83	0.65	0.84	14	0.73
Required values according to class:	≥ 0.75	≥ 0.40	≥ 0.60	≤ 15	≥ 0.50
Fulfilled/Not fulfilled:	✓	✓	✓	✓	✓

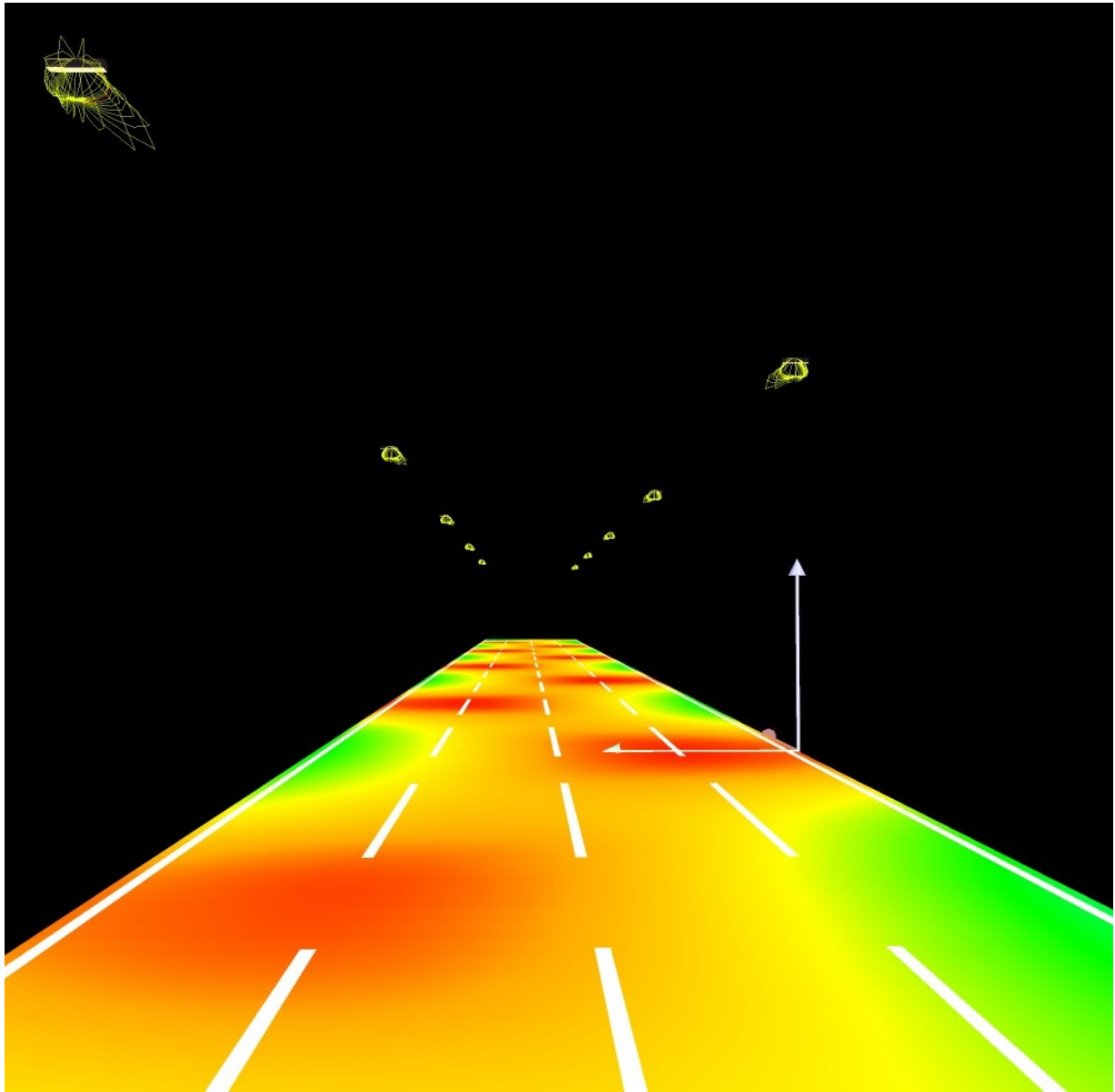
Operator
Telephone
Fax
e-Mail

StreetV2/3DRendering



Operator
Telephone
Fax
e-Mail

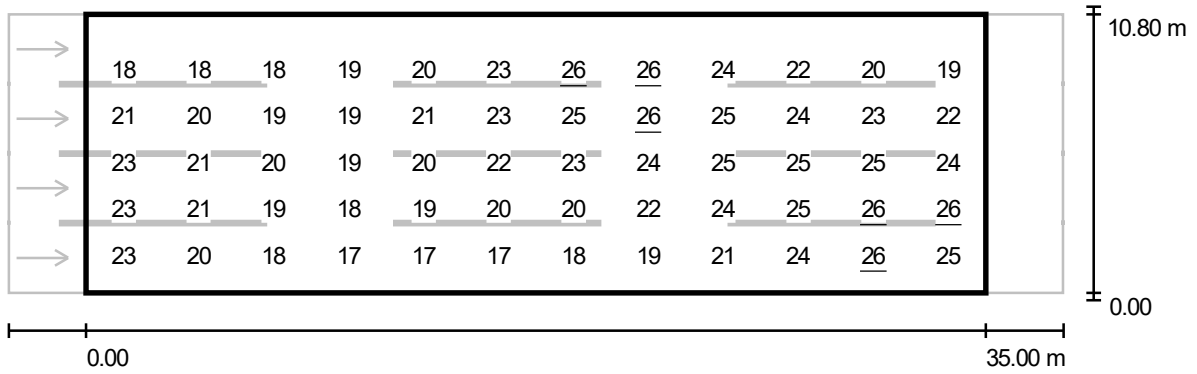
StreetV2/FalseColorRendering



0 3.75 7.50 11.25 15 18.75 22.50 26.25 30 lx

Operator
Telephone
Fax
e-Mail

StreetV2/ValuationFieldRoadway1/ValueChart(E)



Values in Lux, Scale 1 : 294

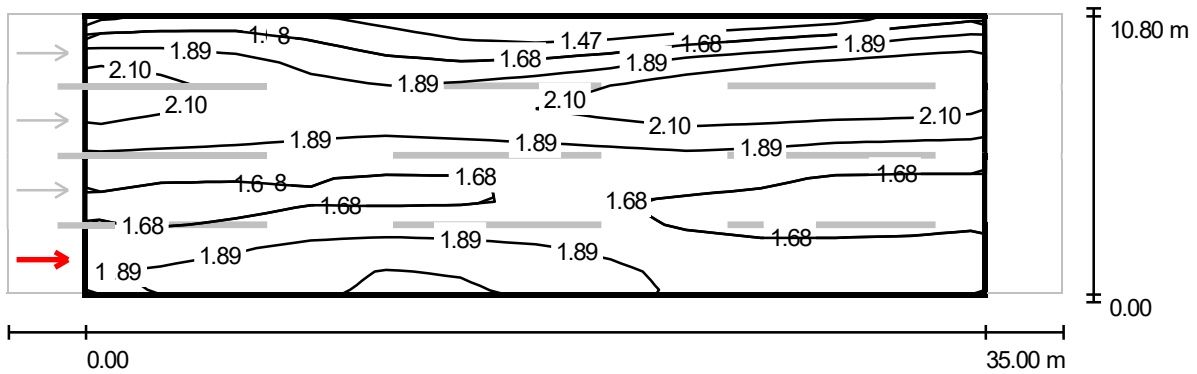
Not all calculated values could be displayed.

Grid: 12 x 12 Points

E_{av} [lx]	E_{min} [lx]	E_{max} [lx]	u0	E_{min} / E_{max}
21	15	26	0.722	0.584

Operator
Telephone
Fax
e-Mail

StreetV2/ValuationFieldRoadway1/Observer1/Isolines(L)



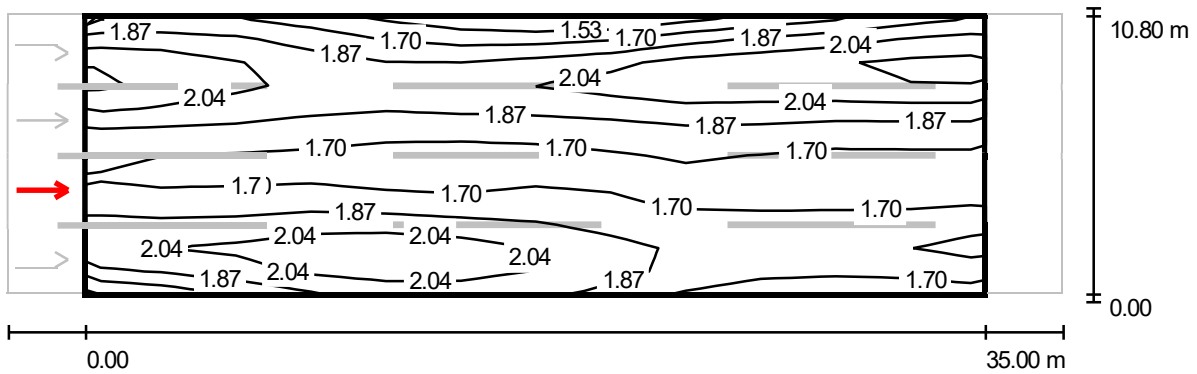
Values in Candela/m², Scale 1 : 294

Grid: 12 x 12 Points
Observer Position: (-60.000 m, 1.350 m, 1.500 m)
tarmac: R3, q0: 0.070

	L_{av} [cd/m²]	U0	UI	TI [%]
Calculated values:	1.84	0.69	0.84	12
Required values according to class ME4a:	≥ 0.75	≥ 0.40	≥ 0.60	≤ 15
Fulfilled/Not fulfilled:	✓	✓	✓	✓

Operator
Telephone
Fax
e-Mail

StreetV2/ValuationFieldRoadway1/Observer2/Isolines(L)



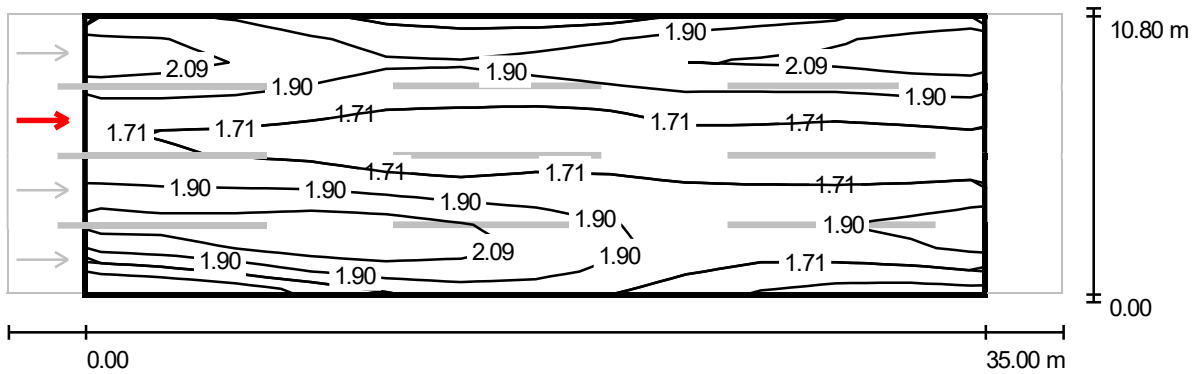
Values in Candela/m², Scale 1 : 294

Grid: 12 x 12 Points
Observer Position: (-60.000 m, 4.050 m, 1.500 m)
tarmac: R3, q0: 0.070

	L_{av} [cd/m²]	U0	UI	TI [%]
Calculated values:	1.86	0.79	0.93	13
Required values according to class ME4a:	≥ 0.75	≥ 0.40	≥ 0.60	≤ 15
Fulfilled/Not fulfilled:	✓	✓	✓	✓

Operator
Telephone
Fax
e-Mail

StreetV2/ValuationFieldRoadway1/Observer3/Isolines(L)



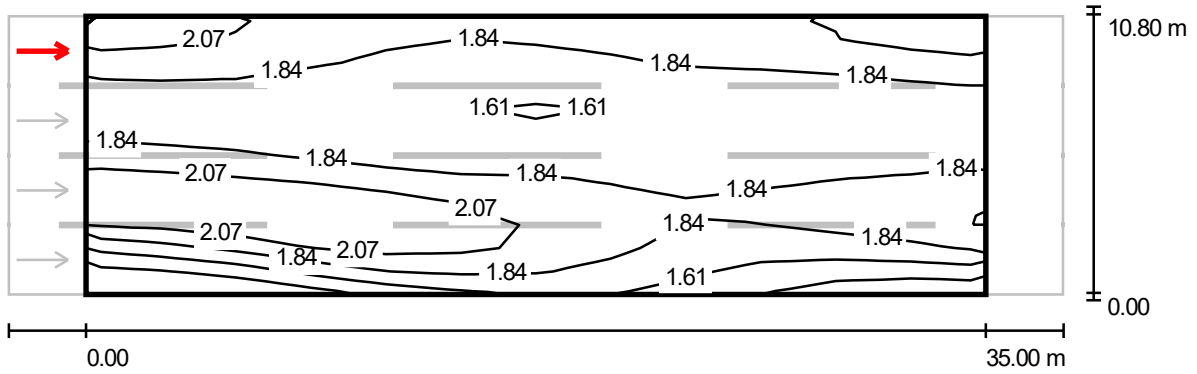
Values in Candela/m², Scale 1 : 294

Grid: 12 x 12 Points
Observer Position: (-60.000 m, 6.750 m, 1.500 m)
tarmac: R3, q0: 0.070

	L_{av} [cd/m ²]	U0	UI	TI [%]
Calculated values:	1.85	0.74	0.92	14
Required values according to class ME4a:	≥ 0.75	≥ 0.40	≥ 0.60	≤ 15
Fulfilled/Not fulfilled:	✓	✓	✓	✓

Operator
Telephone
Fax
e-Mail

StreetV2/ValuationFieldRoadway1/Observer4/Isolines(L)



Values in Candela/m², Scale 1 : 294

Grid: 12 x 12 Points
Observer Position: (-60.000 m, 9.450 m, 1.500 m)
tarmac: R3, q0: 0.070

	L_{av} [cd/m ²]	U0	UI	TI [%]
Calculated values:	1.83	0.65	0.87	14
Required values according to class ME4a:	≥ 0.75	≥ 0.40	≥ 0.60	≤ 15
Fulfilled/Not fulfilled:	✓	✓	✓	✓