

MUNICIPIO DE COLÔNIA DO PIAUÍ
PROJETO LUMINOTECNICO

VIAS TIPO V4

Operator
Telephone
Fax
e-Mail

Table of contents

Road Lighting Project- V3~V4	
Project Cover	1
Table of contents	2
Street V3~V4	
Planning data	3
Photometric Results	5
3D Rendering	6
False Color Rendering	7
Valuation Fields	
Valuation Field Roadway 1	
Value Chart (E)	8
Observer	
Observer 1	
Isolines (L)	9
Observer 2	
Isolines (L)	10
Observer 3	
Isolines (L)	11

Operator
Telephone
Fax
e-Mail

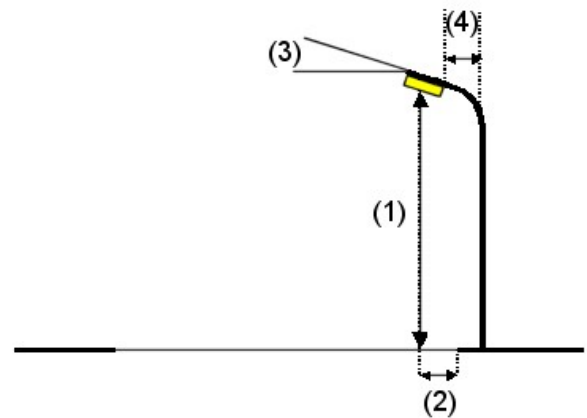
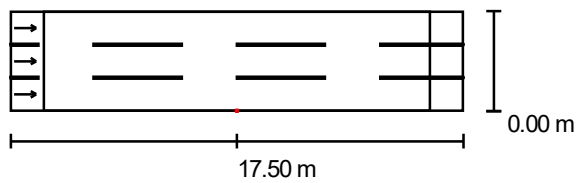
StreetV3~V4/Planningdata

Street Profile

Roadway 1 (Width: 9.000 m, Number of lanes: 3, tarmac: R3, q0: 0.070)

Light loss factor: 0.67

Luminaire Arrangements



Luminaire:	37 W
Luminous flux (Luminaire):	6290 lm
Luminous flux (Lamps):	6290 lm Luminaire
Wattage:	37,0 W
Arrangement:	Single row, bottom
Pole Distance:	35.000 m
Mounting Height (1):	8.000 m
Height:	7.900 m
Overhang (2):	0.000 m
Boom Angle (3):	0.0 °
Boom Length (4):	1.500 m

Maximum luminous intensities

at 70°:	741 cd/klm
at 80°:	571 cd/klm
at 90°:	1.08 cd/klm

Any direction forming the specified angle from the downward vertical, with the luminaire installed for use.

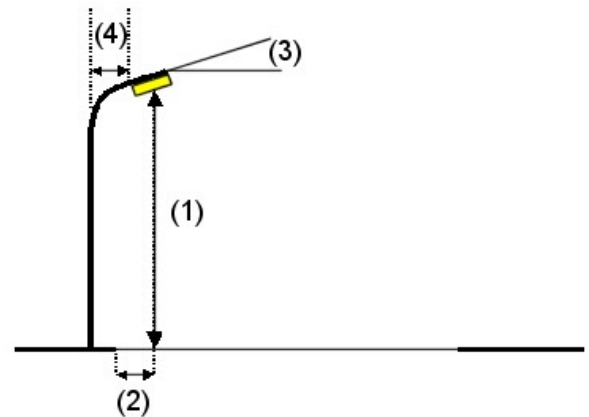
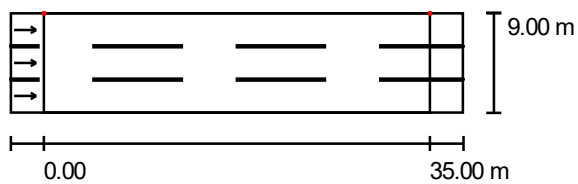
No luminous intensities above 90°.

Arrangement complies with glare index class D.6.

Operator
Telephone
Fax
e-Mail

StreetV3~V4/Planningdata

Luminaire Arrangements



Luminaire:	37W
Luminous flux (Luminaire):	6290 lm
Luminous flux (Lamps):	6290 lm
Luminaire Wattage:	37,0 W
Arrangement:	Single row, top
Pole Distance:	35.000 m
Mounting Height (1):	8.000 m
Height:	7.900 m
Overhang (2):	0.000 m
Boom Angle (3):	0.0 °
Boom Length (4):	1.500 m

Maximum luminous intensities	
at 70°:	741 cd/klm
at 80°:	571 cd/klm
at 90°:	1.08 cd/klm

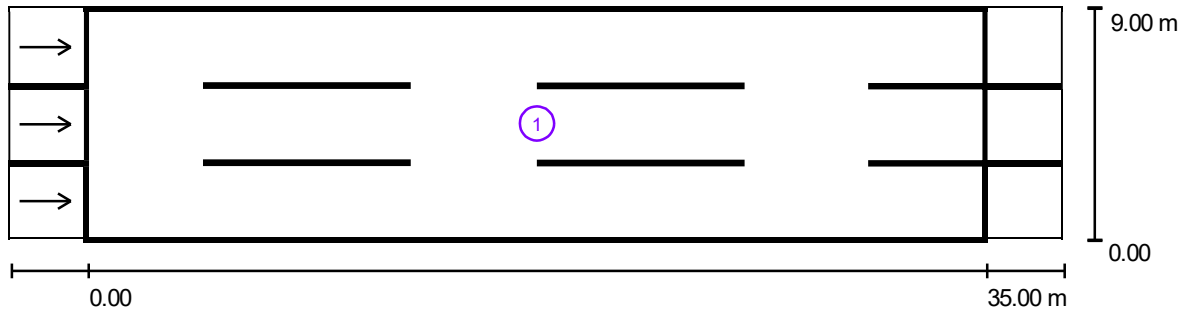
Any direction forming the specified angle from the downward vertical, with the luminaire installed for use.

No luminous intensities above 90°.

Arrangement complies with glare index class D.6.

Operator
Telephone
Fax
e-Mail

StreetV3~V4/PhotometricResults



Light loss factor: 0.67

Scale 1:294

Calculation Field List

- 1 Valuation Field Roadway 1
Length: 35.000 m, Width: 9.000 m
Grid: 12 x 9 Points
Accompanying Street Elements: Roadway 1.
tarmac: R3, q0: 0.070
Selected Lighting Class: ME4a

(All lighting performance requirements are met.)

	L_{av} [cd/m ²]	U0	UI	TI [%]	SR
Calculated values:	1.01	0.68	0.84	14	0.68
Required values according to class:	≥ 0.75	≥ 0.40	≥ 0.60	≤ 15	≥ 0.50
Fulfilled/Not fulfilled:	✓	✓	✓	✓	✓

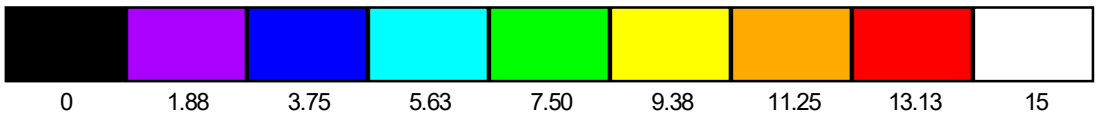
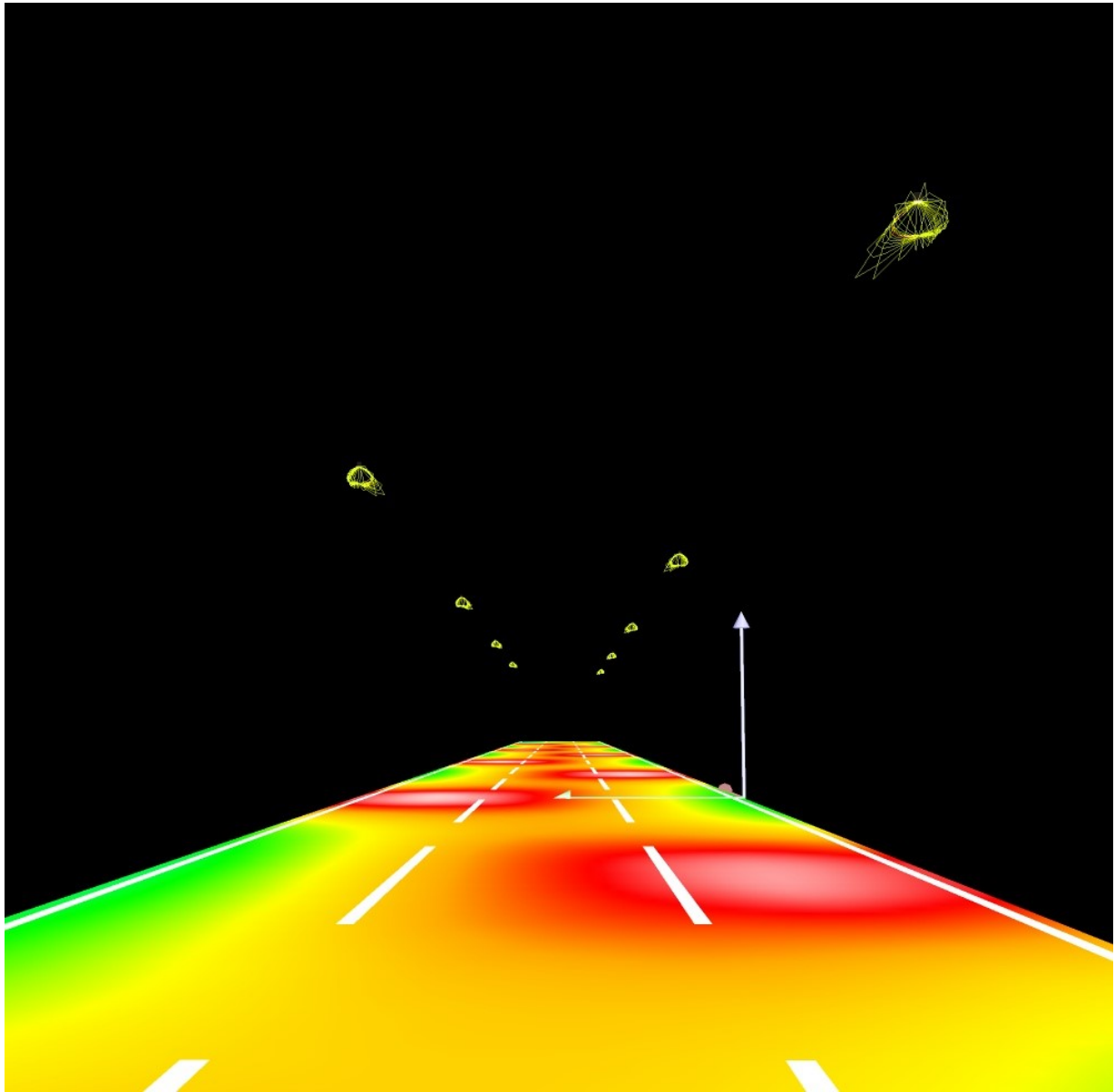
Operator
Telephone
Fax
e-Mail

StreetV3~V4/3DRendering



Operator
Telephone
Fax
e-Mail

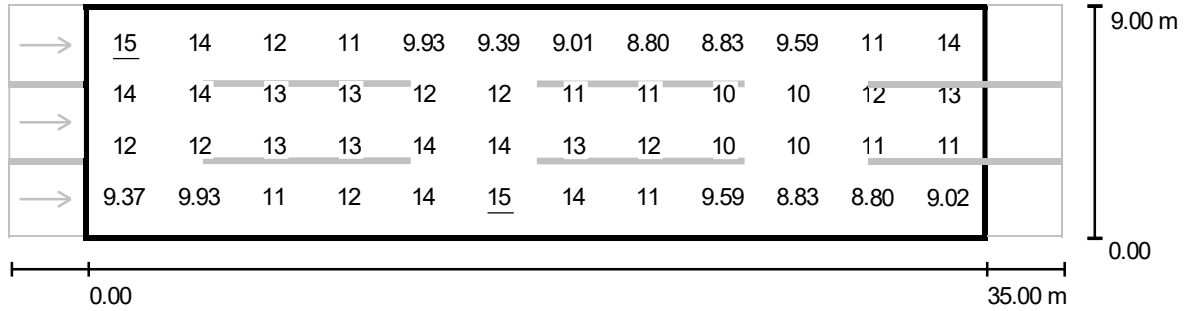
StreetV3~V4/FalseColorRendering



lx

Operator
 Telephone
 Fax
 e-Mail

StreetV3~V4/ValuationFieldRoadway1/ValueChart(E)



Values in Lux, Scale 1 : 294

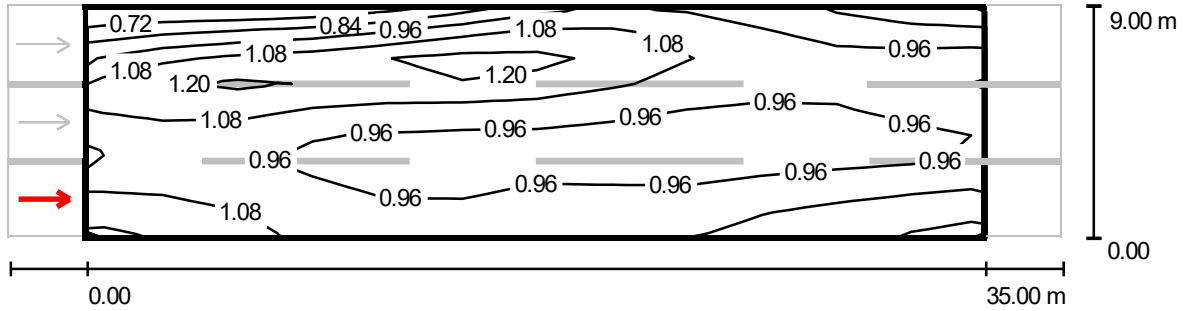
Not all calculated values could be displayed.

Grid: 12 x 9 Points

E_{av} [lx]	E_{min} [lx]	E_{max} [lx]	u0	E_{min} / E_{max}
11	7.71	15	0.678	0.522

Operator
Telephone
Fax
e-Mail

StreetV3~V4/ValuationFieldRoadway1/Observer1/Isolines(L)



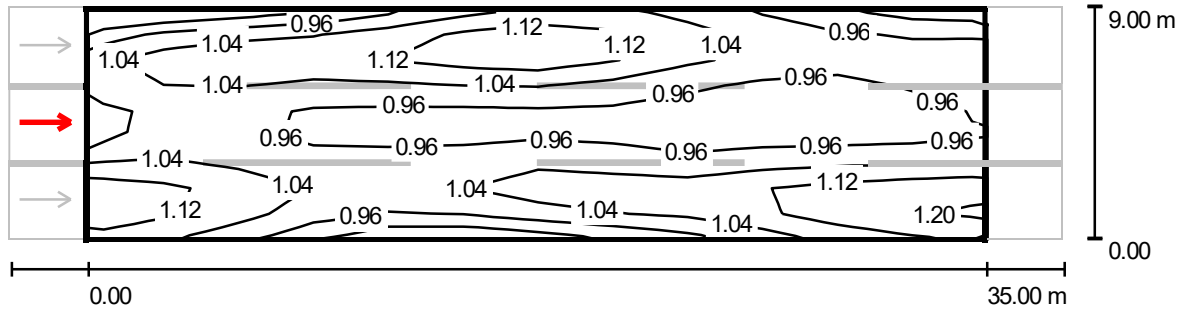
Values in Candela/m², Scale 1 : 294

Grid: 12 x 9 Points
Observer Position: (-60.000 m, 1.500 m, 1.500 m)
tarmac: R3, q0: 0.070

	L_{av} [cd/m ²]	U0	UI	TI [%]
Calculated values:	1.01	0.68	0.85	11
Required values according to class ME4a:	≥ 0.75	≥ 0.40	≥ 0.60	≤ 15
Fulfilled/Not fulfilled:	✓	✓	✓	✓

Operator
Telephone
Fax
e-Mail

StreetV3~V4/ValuationFieldRoadway1/Observer2/Isolines(L)



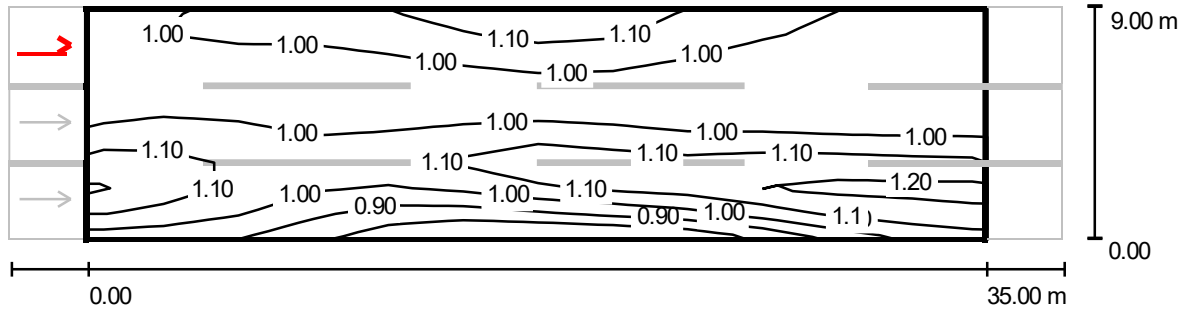
Values in Candela/m², Scale 1 : 294

Grid: 12 x 9 Points
Observer Position: (-60.000 m, 4.500 m, 1.500 m)
tarmac: R3, q0: 0.070

	L_{av} [cd/m ²]	U0	UI	TI [%]
Calculated values:	1.02	0.83	0.89	14
Required values according to class ME4a:	≥ 0.75	≥ 0.40	≥ 0.60	≤ 15
Fulfilled/Not fulfilled:	✓	✓	✓	✓

Operator
Telephone
Fax
e-Mail

StreetV3~V4/ValuationFieldRoadway1/Observer3/Isolines(L)



Values in Candela/m², Scale 1 : 294

Grid: 12 x 9 Points
Observer Position: (-60.000 m, 7.500 m, 1.500 m)
tarmac: R3, q0: 0.070

	L_{av} [cd/m ²]	U0	UI	TI [%]
Calculated values:	1.01	0.73	0.84	13
Required values according to class ME4a:	≥ 0.75	≥ 0.40	≥ 0.60	≤ 15
Fulfilled/Not fulfilled:	✓	✓	✓	✓